

DVR NETWORK SETTING GUIDE

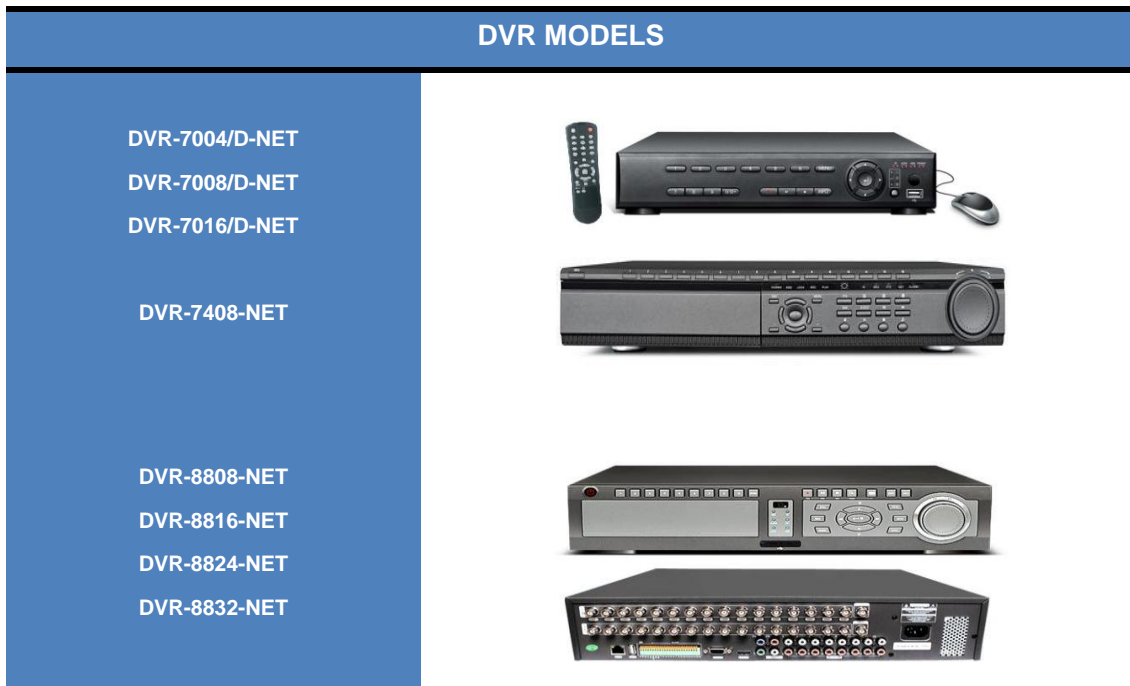
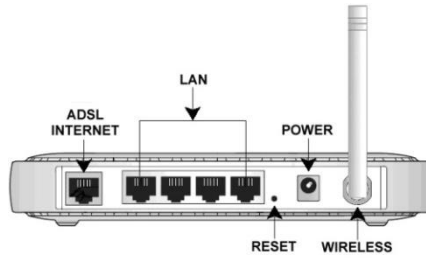


Table of Contents

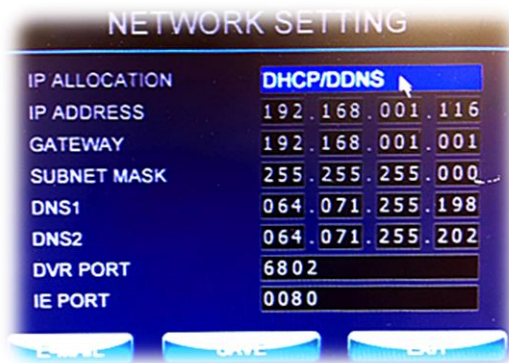
DVR Network Settings	-----PAGE 3
CMS Software Guide	-----PAGE 7
Iphone Software Operate	-----PAGE8
Blackberry Software Operate	-----PAGE9
<i>Related Articles:</i>	
Internal and External IP Address	-----PAGE10
Port Forwarding Guide	-----PAGE12
◆ TP-Link Router	-----page3
◆ Linksys Wireless Router	-----page12
◆ Linksys Wired Router	-----page12
◆ D-Link Wireless Router	-----page13
◆ Belkin Router	-----page13
◆ Netgear Router	-----page14
◆ Westell Router	-----page 15

#700-800 DVR NETWORK SET UP

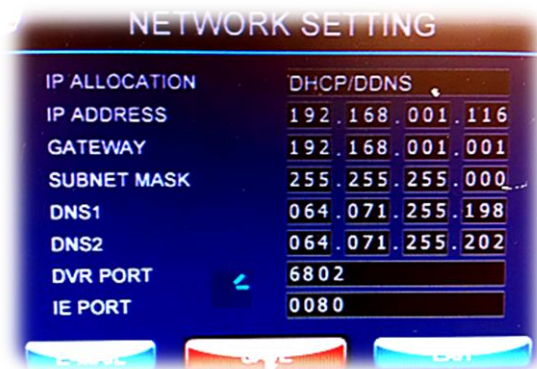
Before setting the networking function, make sure u have a **Router** and a **CAT5E** cable to connect the DVR and the **Router**.



1. Connect the DVR and the Router. Make sure the Router works well.
2. Right click the screen of DVR. Click the "Menu" to enter the Menu window.
3. Select the "Networking". Click IP ALLOCATION to set it from default to **DHPS /DDNS**.



4. Now memorize or write down to the paper the IP ADDRESS, DVR port number (**the default is 6802**) and the IE port number (**the default is 80**).



5. Turn on any computer within the same network of the DVR. Visit the IP address of your Router. Making **port forwarding**, make the DVR port number (6802) and the IE port number (80) forward to the IP ADDRESS of the DVR.

- **This step is critical.**
- *We are not able to know the IP address of your Router, and we cannot specify how to do port forwarding on your computer because that is not within our service and it is very complex.*
- *Different Routers have different ways to make port forwarding. So you need to ask your technician about the IP address of your Router.*
- *And read the Instruction of your Router or phone your Internet Carrier to get to know how to do Port Forwarding through visiting your Router on your computer.*
- **Bell always block all ports, For bell users you have to call their tech support to unblock your IP**

esp.

 [Back to the top](#)



TP-LINK Port Forwarding:

Enter the router IP address

Your user name and password

connect to 192.168.1.1

The server 192.168.1.1 at TP-LINK Wireless Router (WR541G) requires a username and password.

Warning: This server is requesting that your username and password be sent in an insecure manner (basic authentication without a secure connection).

User name: []

Password: []

Remember my password

OK Cancel



How to Find Your Routers internal and external IP address? See page 10.

TP-LINK 54M Wireless Router with eXtended Range™

54M Wireless Router
Model No.: TL-WR541G / TL-WR542G

Virtual Servers

ID	Service Port	IP Address	Protocol	Status	Modify
<input type="button" value="Add New"/> <input type="button" value="Enable All"/> <input type="button" value="Disable All"/> <input type="button" value="Delete All"/>					
<input type="button" value="Previous"/> <input type="button" value="Next"/>					

TP-LINK 54M Wireless Router with eXtended Range™

54M Wireless Router
Model No.: TL-WR541G / TL-WR542G

Add or Modify a Virtual Server Entry

Service Port: [80] (XXX-XXX or XXX)

IP Address: [192.168.1.116]

Protocol: [ALL]

Status: [Enabled]

Common Service Port: [--Select One--]

NETWORK SETTING

IP ALLOCATION: DHCP/DNS

IP ADDRESS: 192.168.001.116

GATEWAY: 192.168.001.001

SUBNET MASK: 255.255.255.000

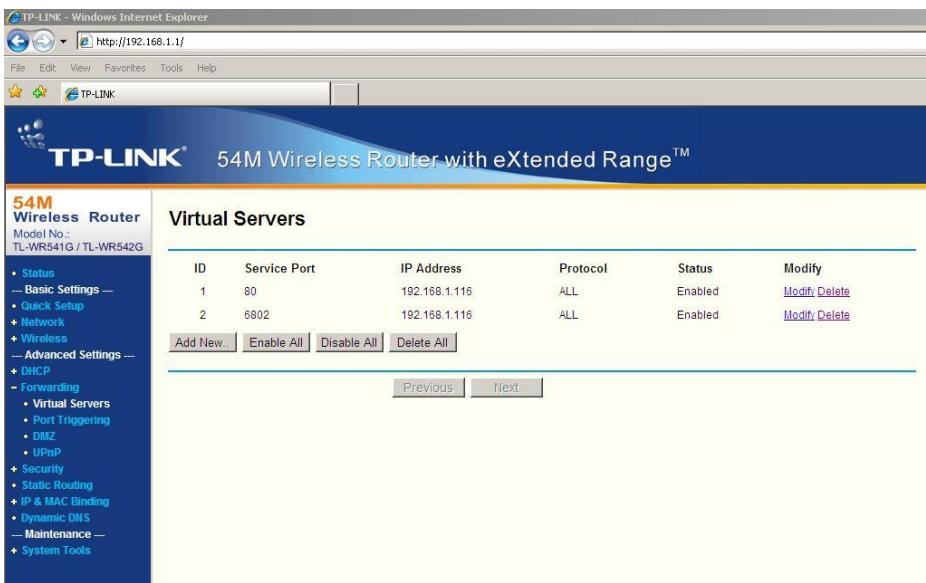
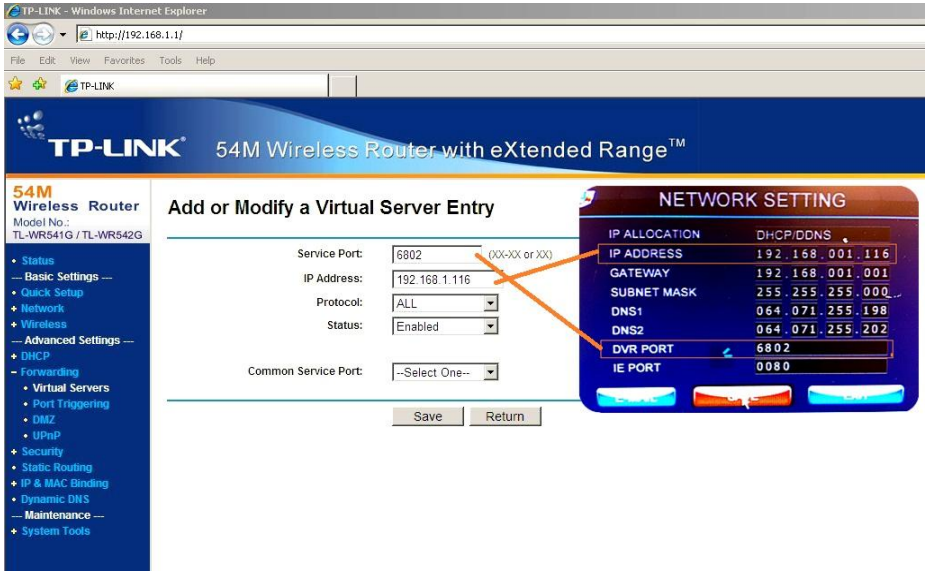
DNS1: 064.071.255.198

DNS2: 064.071.255.202

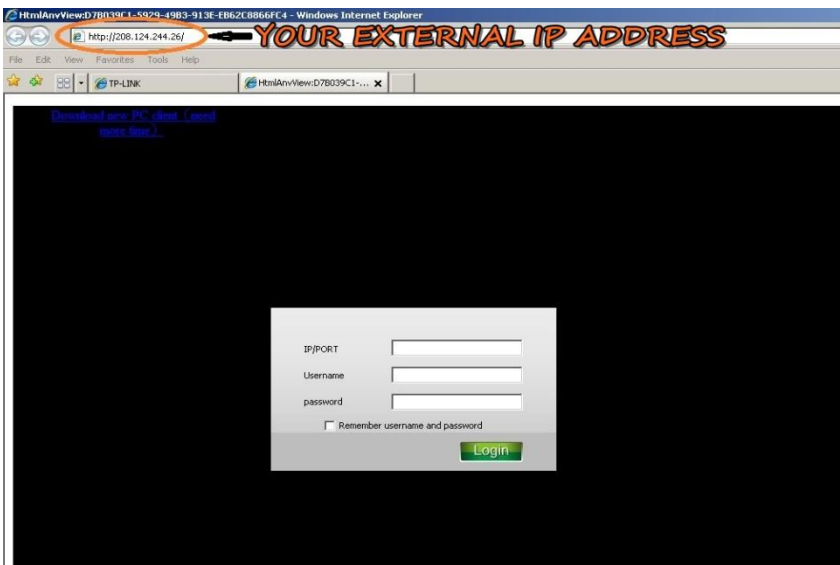
DVR PORT: 6802

IE PORT: 0080

Back to the top

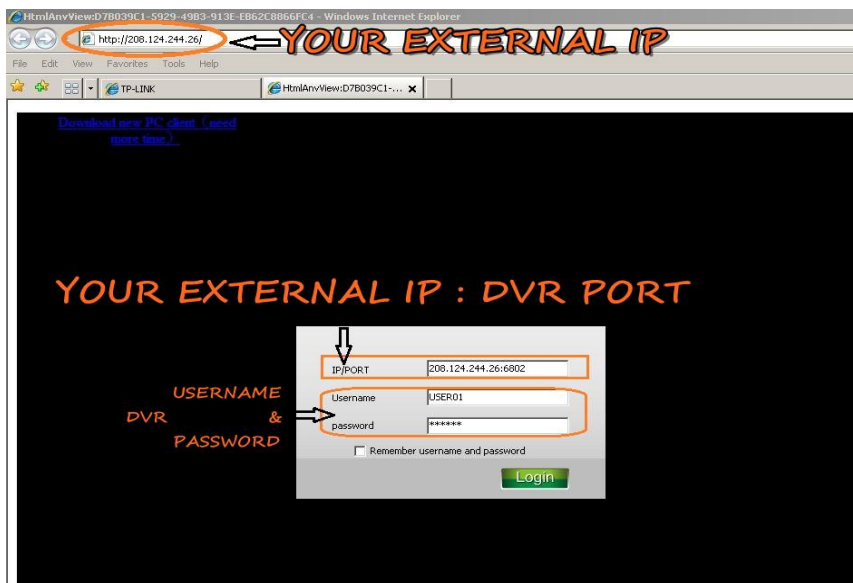


6. When finished port forwarding, open the IE (Internet Explorer) on any computers. Visit the public IP address of your company.

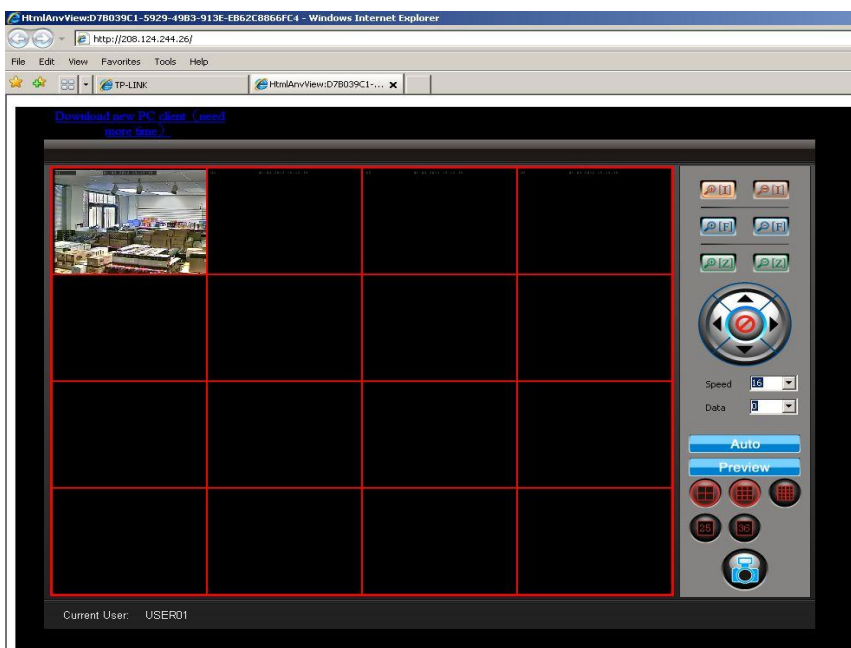


 [Back to the top](#)

- If you have no idea on what your public IP address is, just Goggled or Bing “My IP” on the computer within the same network of your DVR. Then click the first result, you will see it. (<http://www.whatismyip.com/>)
 - On the other hand, if your computer runs Windows 7 or Windows Vista. Don't use the IE. **Just open the software on the mini disc within the package of the DVR.**
 - You will be asked to allow the computer to run an **ActiveX** by the IE. Just allow it. If there is nothing happened. Go to the Internet Options of your IE. Select Security and click” Custom Level...”. Find two options:
 - a. **Download unsigned ActiveX controls.** Set it into Prompt
 - b. **Initialize and script ActiveX controls not marked as safe for scripting.** Set it into Enable.
7. After an ActiveX is installed on your computer, a dark blue window appears.
- a. For the Server, enter the IP address of your public IP and a “:”, followed which you need to input 6802. E.g.: “192.168.1.126:6802”
 - b. For the USER, enter the user name **ADMIN0** or **USER01/USER02/USER03**.
 - c. For the password, enter **'000000'** or **'111111/222222/333333'**



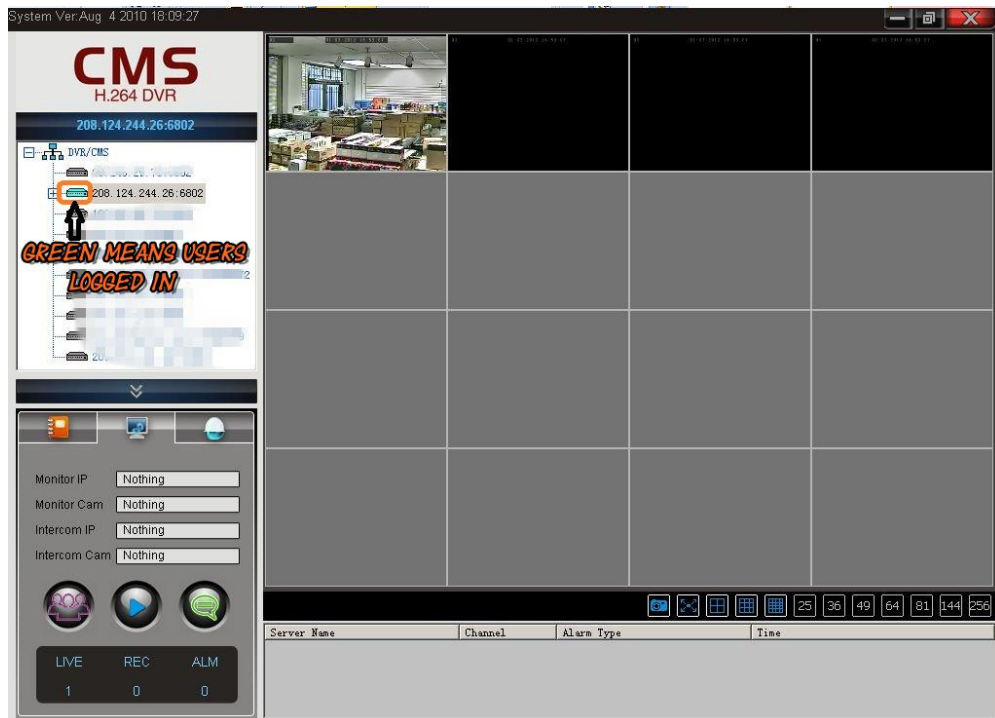
And then, you will get the picture on your computer.



 [Back to the top](#)



WHICH IS COME WITH THE DVR IN THE MINI DISK



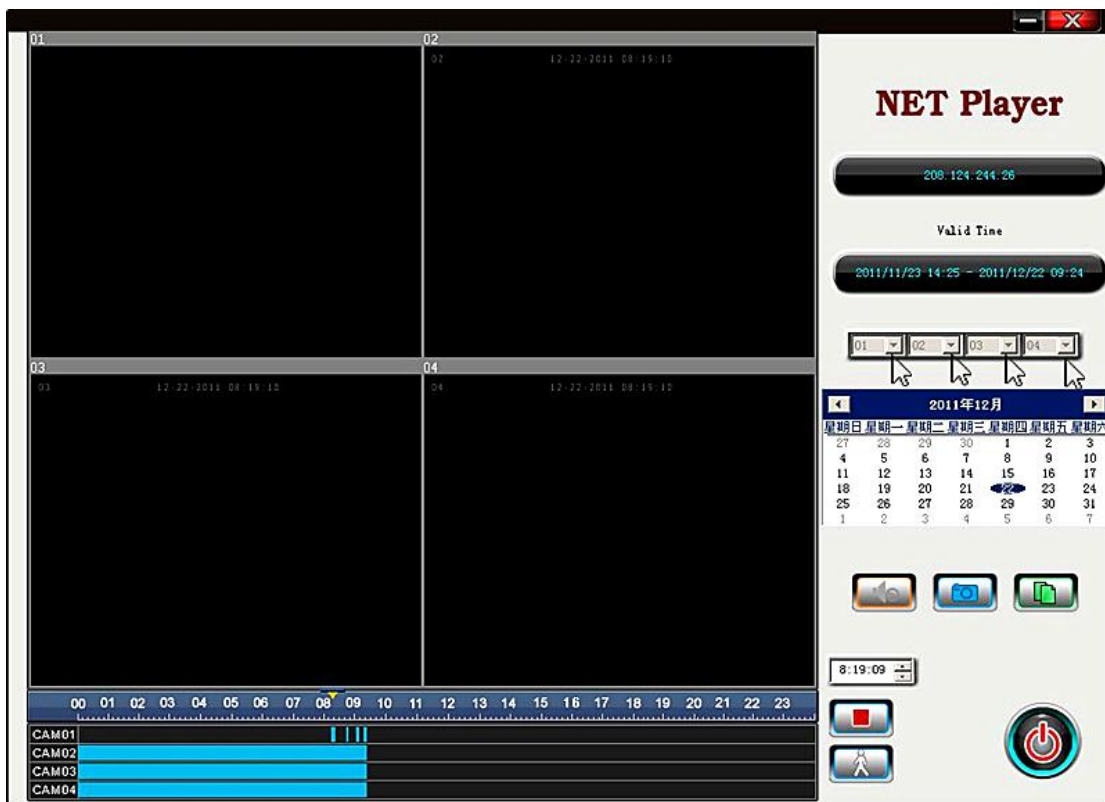
 [Back to the top](#)



NOTE:

- IF ADMIN LOGIN OTHER USERS WILL BE KICKED OUT
- ADMIN IS THE ONLY USER CAN VIEW THE PLAYBACK, RIGHT CLICK THE IP ADDRESS AND CHOOSE "NET PLAYBACK"

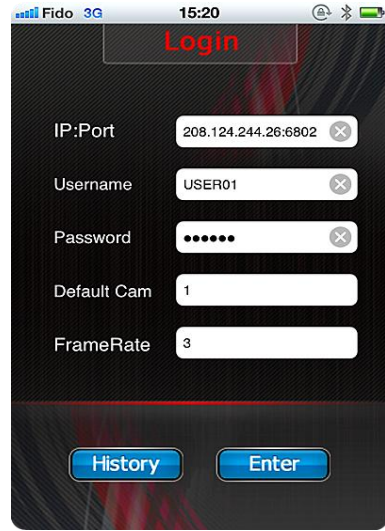
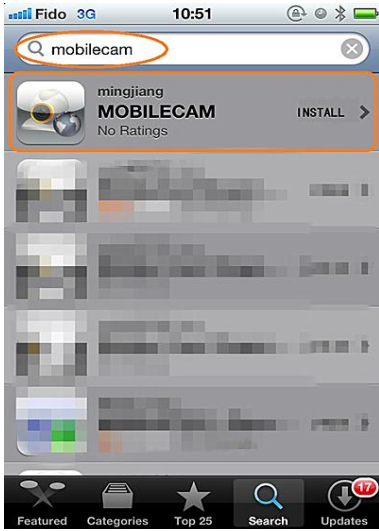
CMS NET PLAYBACK 



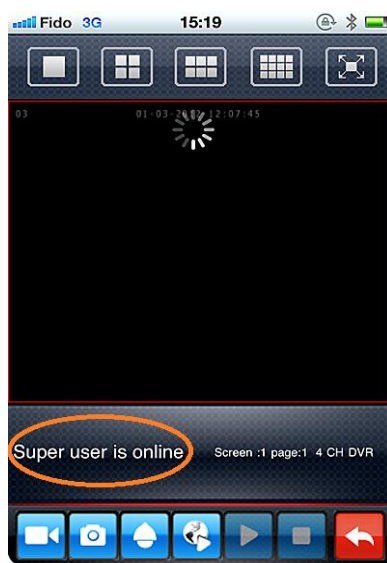
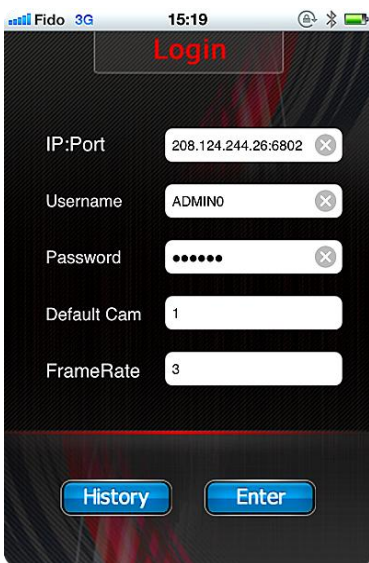
 [Back to the top](#)

IPHONE SOFTWARE

MOBILECAM



NOTE: IF ADMIN LOGIN OTHER USERS WILL BE KICKED OUT, ADMIN0 IS THE ONLY USER CAN VIEW THE PLAYBACK

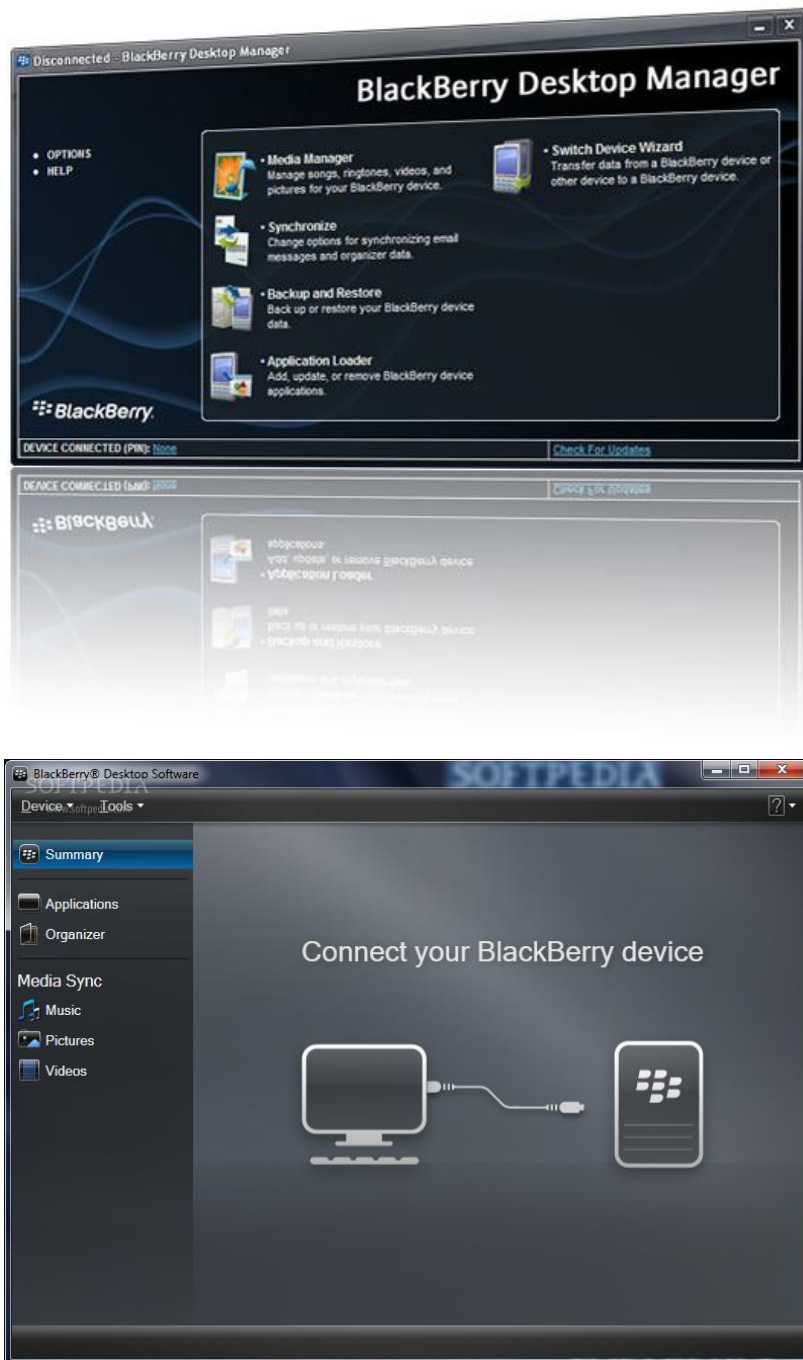


 [Back to the top](#)


Software for Blackberry

Downloads these blackberry software and then upload them to blackberry desktop manger.

[blackberry software 1](#) [blackberry software 2](#) [blackberry software 3](#)



And then install those soft wares to your blackberry

 [Back to the top](#)

Related Articles



Find your internal and external IP address

Each **router** has 2 IP addresses: an **internal IP address** and an **external IP address**.

- Your router's internal IP address is what you use to talk to your router. Use this IP address to login to your router and configure it for things like port forwarding.
- Your router's external IP address is what the rest of the world uses to find you on the Internet. Tell this IP address to people who are trying to connect to you if you are hosting a game or other kind of server.

Notice the dashed line in the image below. The dashed line represents the division of two different IP addresses in your router.

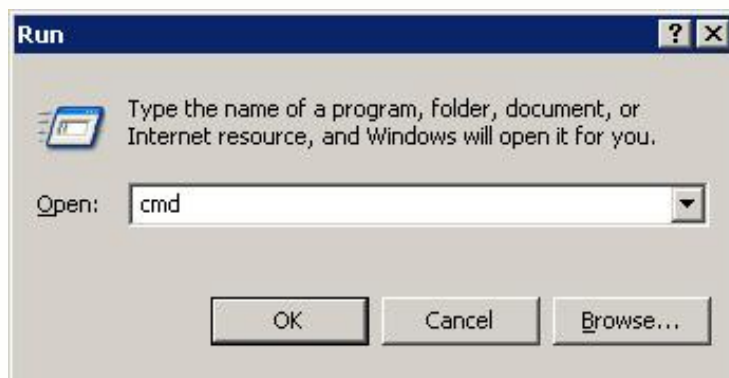


How To Find Your Routers Internal IP Address

You have 2 options here. You can either:

- Download **Free Static IP Software**, which will tell you your routers internal IP address (it will be called "gateway address"), or
- Use the Windows command prompt

To find your routers **internal** IP address the easiest method is with a little command line tool called **ipconfig** that comes with Windows. First you need to click **Start** and find the **Run** command. You should see a little run dialog box that looks something like this.



In the run dialog box type in **cmd** and either press enter or click the **Ok** button. You should see a black window with white text, referred to as a **command prompt**.



```
C:\WINDOWS\system32\cmd.exe
Microsoft Windows XP [Version 5.1.2600]
(C) Copyright 1985-2001 Microsoft Corp.

C:\Documents and Settings\Jason>
```

At the **command prompt** type in **ipconfig** and press enter. You should see results that look like the following image.

```
C:\WINDOWS\system32\cmd.exe
Microsoft Windows XP [Version 5.1.2600]
(C) Copyright 1985-2001 Microsoft Corp.

C:\Documents and Settings\Jason>ipconfig

Windows IP Configuration

Ethernet adapter Local Area Connection:

    Connection-specific DNS Suffix . . :
    IP Address . . . . . : 192.168.0.50
    Subnet Mask . . . . . : 255.255.255.0
    Default Gateway . . . . . : 192.168.0.1

C:\Documents and Settings\Jason>
```

I have circled the **routers IP** address in red in the above image. Notice that windows list it under the title **Default Gateway**.

REMEMBER: This is the IP address that you use to configure your router for port forwarding.



How To Find Your Routers external IP Address



The easiest way to determine your routers external IP address is

[what is my IP](#)

[Back to the top](#)

How to do Port Forwarding

Note: Many routers require restarting for changes to take effect which will cause a brief period of a disconnected internet connection.

Choose Your Routers:

- [Linksys Wireless Router](#)
- [Linksys Wired Router](#)
- [D-Link Wireless Router](#)
- [Belkin Router](#)
- [Netgear Router](#)
- [Westell Router](#)
- [Netopia Router](#)
- [Two-Wire Router](#)
- [Motorola Router](#)

Linksys Wireless Router

Enable the system by checking the enabled box.

The port forwarding process is dependant on the brand and model number of the router being used. Port forwarding of a router is required with your system to allow user access to your DVR. Regardless of the Linksys Wireless Router being used, the process of port forwarding is similar. You will need to enable the ports by locating the port range forwarding screen. With some Linksys routers the port forwarding screen is located within the Applications and Games or Filters tab; in others it is located in the advance tools tab. The set up instruction outlined below is an example of port forwarding using Linksys Model WRK54GV2.

Steps:

1. Open your web browser. Enter the router IP address 192.168.1.1 in the address bar, followed by pressing Enter.
2. Enter the user name and password (admin by default) and press the OK button.
3. Select the Applications and Gaming tab.
 - Select the Port Range Forwarding tab.
 - In the Application column enter a description of your DVR.
 - In the Start entry field enter the first number of the port you need to port forward
 - (e.g. 80)
 - In the End entry field enter the last number of the port you need to port forward
 - (e.g. 80)
 - In the Protocol field, select Both.
 - In the IP address field, enter the computer network IP address you recorded previously during the Quick Set Up Guide process.
 - Enable the system by checking the enabled box.
 - Select the Save settings button located at the bottom of the page to save your changes.

Linksys Wired Router

The port forwarding process is dependant on the brand and model number of the router being used. Port forwarding of a router is required with your system to allow user access to your DVR. Regardless of the Linksys Wired Router being used, the process of port forwarding is similar. You will need to enable the ports by locating the port range forwarding screen. With some Linksys routers the port forwarding screen is located within the Applications and Games or Filters tab; in others it is located in the advance tools tab. The set up instruction outlined below is an example of port forwarding using

Linksys Model BEFSR41.

Steps:

1. Open your web browser. Enter the router IP address 192.168.1.1 in the address bar, followed by pressing Enter.
2. Enter the user name and password (admin by default) and press the OK button.

-
3. Select the Applications and Gaming tab.
 - Select the Port Range Forwarding tab.
 - In the Application column enter a description of your DVR.
 - In the Start entry field enter the first number of the port you need to port forward
 - (e.g. 80)
 - In the End entry field enter the last number of the port you need to port forward
 - (e.g. 80)
 - In the Protocol field, select Both.
 - In the IP address field, enter the computer network IP address you recorded previously during the Quick Set Up Guide process.
 - Enable the system by checking the enabled box.
 - Select the Save settings button located at the bottom of the page to save your changes.

D-Link Router

The port forwarding process is dependant on the brand and model number of the router being used. Port forwarding of a router is required with your system to allow user access to your DVR. Regardless of the DLINK Wireless Router being used, the process of port forwarding is similar. You will need to enable the ports by locating the port range forwarding screen. With some DLINK routers the port forwarding screen is located within the Applications and Games or Filters tab; in others it is located in the advance tools tab. The set up instruction outlined below is an example of port forwarding using DLINK Model DI-524.

Steps:

1. Open your web browser. Enter the router IP address 192.168.0.1 in the address bar, followed by pressing Enter.
2. Enter the user name (admin). Leave the password blank followed by pressing the OK button.
3. Select the Advanced tab.
4. Select the Virtual Server tab.
 - In the Name field enter a description of your DVR.
 - In the Private IP field enter the DVR IP address.
 - In the Protocol field, select Both.
 - In the Private port enter the port number you need to port forward
 - (e.g. 80)
 - In the Public port re-enter the port number you entered in the private port field
 - (e.g. 80)
 - Select the Schedule to Always.

If more ports are required to be port forwarded, repeat the above steps. When complete, select the Apply button located at the bottom of the page to save your changes.

Belkin Router

The port forwarding process is dependant on the brand and model number of the router being used. Port forwarding of a router is required with your system to allow user access to your DVR. Regardless of the Belkin Wired Router being used, the process of port forwarding is similar. You will need to enable the ports by locating the port range forwarding screen. With most Belkin routers the port forwarding screen is located within the Virtual Servers option tab. The set up instruction outlined below is an example of port forwarding using Belkin Model F5D8230-4.

The Steps:

1. Open your web browser. Enter the router IP address 192.168.2.1 in the address bar, followed by pressing Enter.
2. In the status page, select the Virtual Servers option located down the left hand side of the page.
3. In the Administrator's page, enter your password. The default setting is left blank. Select the Submit button.

In the Virtual Server screen proceed as follows:

- Enable the system by checking the enabled box

-
- In the Description column enter a description of your DVR.
 - In the Inbound Port entry field enter in the first box the first number of the port you need to port forward and the ending port number in the second box in (e.g. 80 - 80)
 - In the Type field, select Both.
 - In the Private IP Address field, enter the IP address of the DVR
 - In the Private Ports column re-enter in the first box, the first number of the port you need to port forward and in the second box the ending port number (e.g. 80 - 80).
 - Select the Apply Changes button located at the top of the page to save your changes

Netgear Router

The port forwarding process may vary depending on the brand and model number of the router being used. Port forwarding of a router is required to allow user access to your DVR. Regardless of the Netgear router being used, the process of port forwarding is similar. You will need to enable the ports by locating the port range forwarding screen. The set up instruction outlined below is an example of port forwarding a Netgear Router using Netgear Model DG 824M.

Steps

1. Open your web browser. Enter the router IP address 192.168.0.1 in the address bar, followed by pressing Enter.
2. Enter 'admin' in the User Name and 'password' in the Password dialog box to enter the Westell configuration page.
3. Select the Services button in the Security menu
 - In the Services menu, select the Add Custom Service button
 - In the Services screen, proceed as follows:
 - In the Name field, select DVR
 - In the Type field, select TCP
 - In the Start Port field, enter the first number of the port you need to port forward
 - (e.g. 80)
 - In the Finish Port field, enter the ending port number (e.g. 80)
 - Check the Apply button
 - Next, in the Security option, select Rules
 - Next, in the Rules screen select Add in the inbound services.
 - Next, in the Inbound services proceed as follows:
 - In the Service drop down list, select the newly created DVR entry.
 - In the Action field, select ALLOW always.
 - In the Send to LAN Server field, enter your computers IP address.
 - In the WAN Users field, set to Any.
 - In the Log field, set to Never.
 - Click on Apply.

Westell Router

The port forwarding process may vary depending on the brand and model number of the router being used. Port forwarding of a router is required to allow user access to your DVR. Regardless of the Westell Router being used, the process of port forwarding is similar. You will need to enable the ports by locating the port range forwarding screen. The set up instruction outlined below is an example of port forwarding a Westell Router using Westell VERSALINK.

Steps:

1. Open your web browser. Enter the router IP address 192.168.62.1 in the address bar, followed by pressing Enter.
2. Enter 'admin' in the User Name and 'admin' in the Password dialog box to enter the Westell configuration page. Select 'Configuration'
3. Select the Define Custom Service Tab.
 - In the Port Range setting screen, proceed as follows:

-
- In the Service Name field, type DVR
 - In the Global Port Range field, enter in the first box, the first number of the port you need to port forward (e.g. 80) and in the second box the ending port number (e.g. 80)
 - In the Base Host Port enter the first port to be forwarded (80)
 - In Protocol, select TCP
 - Select the Next button when complete
4. A confirmation window will appear on the screen which shows the same information just entered. Select the close button to continue. You should now be in the Configuration Window screen. Select the Define Customer Service button, followed by selecting the Port Forwarding Ranges of Port option. Finally click the Next button.
 5. Use the Select a Service drop down box and select the configuration just created. Select the Enable button.

Netopia Router

The port forwarding process may vary depending on the brand and model number of the router being used. Port forwarding of a router is required to allow user access to your DVR. Regardless of the Netopia router being used, the process of port forwarding is similar. You will need to enable the ports by locating the port range forwarding screen. The set up instruction outlined below is an example of port forwarding a Netopia Router using Netopia Model 3346.

Steps:

1. Open your web browser.
2. Enter the router IP address 192.168.62.1 in the address bar, followed by pressing
3. Enter.
4. Enter 'admin' in the User Name and '1234' in the Password dialog box followed by 'OK' to enter the Netopia configuration page.
5. Select Expert Mode.
6. Select the Yes, enter expert mode button
7. Select Configure followed by selecting NAT.
8. Select the Define Custom Service button
9. Select Port Forwarding Range of Ports, followed by Next.
10. In the Port Range screen, proceed as follows:
 - a) In the Service Name field, type DVR
 - b) In the Global Port Range field, enter in the first box, the first number of the port you need to port forward (e.g. 80) and in the second box the ending port number (e.g. 80)
 - c) In the Base Host Port enter the first port to be forwarded (80)
 - d) In Protocol, select TCP
 - e) Select the Next button when complete
11. In the Nat Configuration Menu, use the Service Name down box and select the configuration just created. Select the Enable button.

Port forwarding for the Netopia router is now complete!

Two-Wire Router

The port forwarding process may vary depending on the brand and model number of the router being used. Port forwarding of a router is required to allow user access to your DVR. Regardless of the Two-Wire Router being used, the process of port forwarding is similar. You will need to enable the ports by locating the port range forwarding screen (Note: in many two wire systems, it is located in the firewall setting). The set up instruction outlined below is an example of port forwarding a Two-Wire Router using Two-Wire Model 1800G.

Steps:

1. Open your web browser. Enter the router IP address 192.168.1.254 in the address bar, followed by pressing Enter.
2. Select the Firewall Tab.
3. Select Firewall Settings.
4. In the Edit Firewall Settings tab, select add a new user defined application.
 - Select the Back button to return to the Edit Firewall Screen
 - In the Edit Firewall Settings proceed as follows:
 - In the Application Name field, type DVR
 - In the Protocol selection, select TCP
 - In the Port field, enter in the first box, the first number of the port you need to port forward (e.g. 80) and in the second box the ending port number (e.g. 80).
 - Select the Add Definition button.
5. In the Edit Firewall Settings proceed as follows:
 - In the Select a Computer field, select DVR
 - In the Edit a Firewall Setting, check the Allow Individual Applications box and highlight the DVR application which you just created. Click Add.
 - Finally select the done button at the bottom of the screen.

Motorola Router

The port forwarding process may vary depending on the brand and model number of the router being used. Port forwarding of a router is required to allow user access to your DVR. Regardless of the Motorola router being used, the process of port forwarding is similar. You will need to enable the ports by locating the port range forwarding screen. The set up instruction outlined below is an example of port forwarding a Motorola Router use Motorola Model SBG 1000.

Steps:

1. Open your web browser. Enter the router IP address 192.168.0.1 in the address bar, followed by pressing Enter.
2. Enter 'admin' in the User ID and 'motorola' in the Password dialog box followed by clicking 'Log In' to enter the Motorola configuration page.
3. Select the Gateway button
4. Select the Port Forwarding button
5. Select In the Add New Port Forward Entry screen, proceed as follows:
 - a) In the Template field, select Custom
 - b) In the Name field, select DVR
 - c) In the Port Start field, enter the first number of the port you need to port forward (e.g. 80)
 - d) In the Port End field, enter the ending port number (e.g. 80)
 - e) In the LAN IP Address field enter the IP address (192.168.0.1)
 - f) Check the Enable button
 - g) Finally click the Add button, followed by selecting the Apply button.

[Back to Top](#)